

NORTH COUNTRY TRAIL

North Country
Climbing Area

Aspen Glade
Climbing Area

North Country Trail

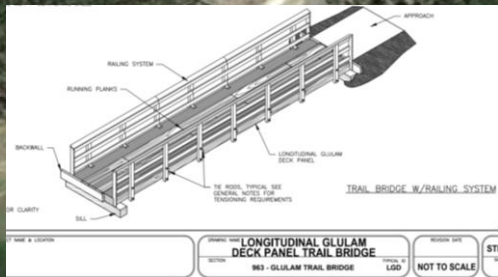
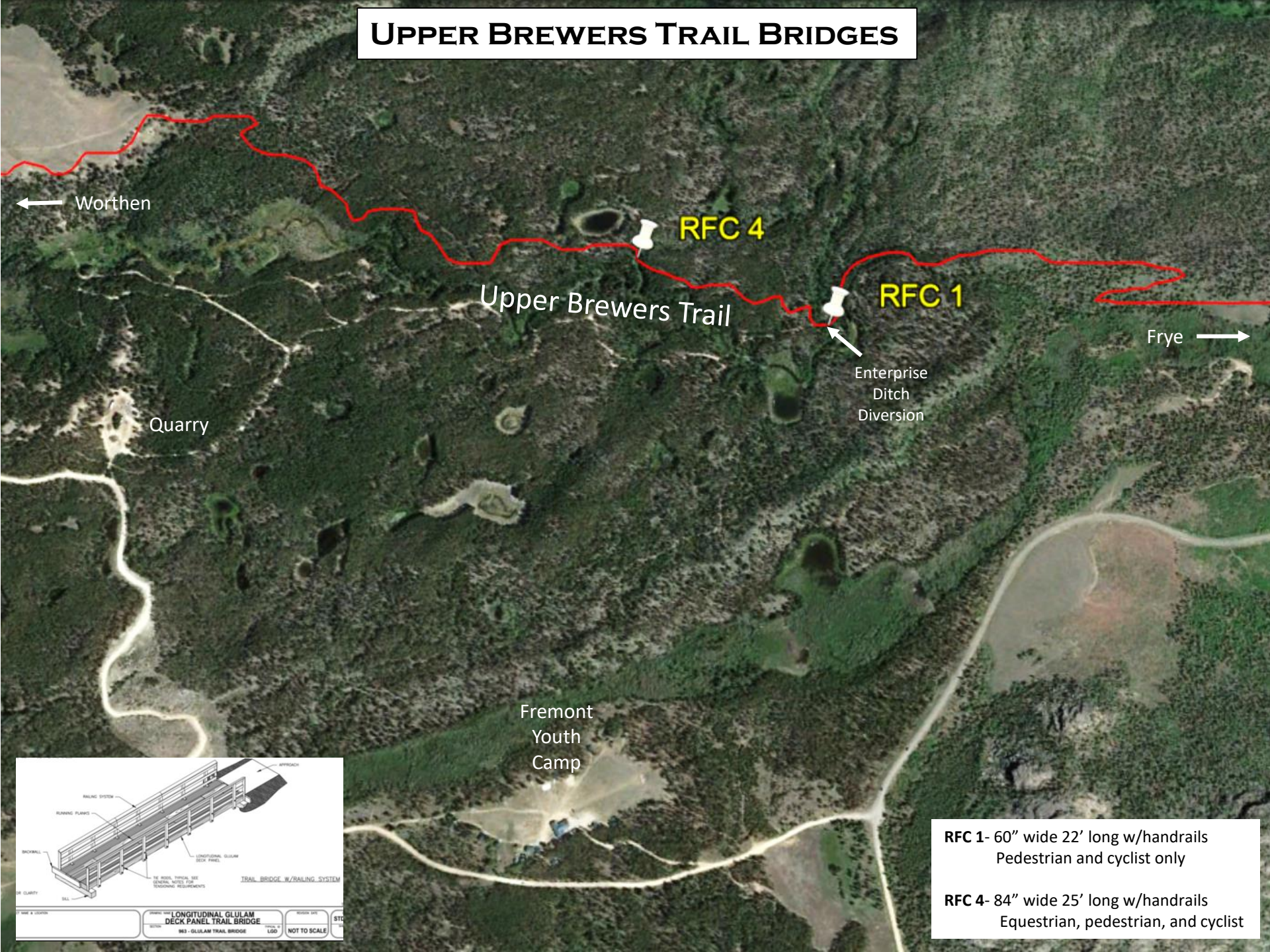
Aspen Glade Trail

Gate

Aspen Glade
Parking/Dispersed Camping

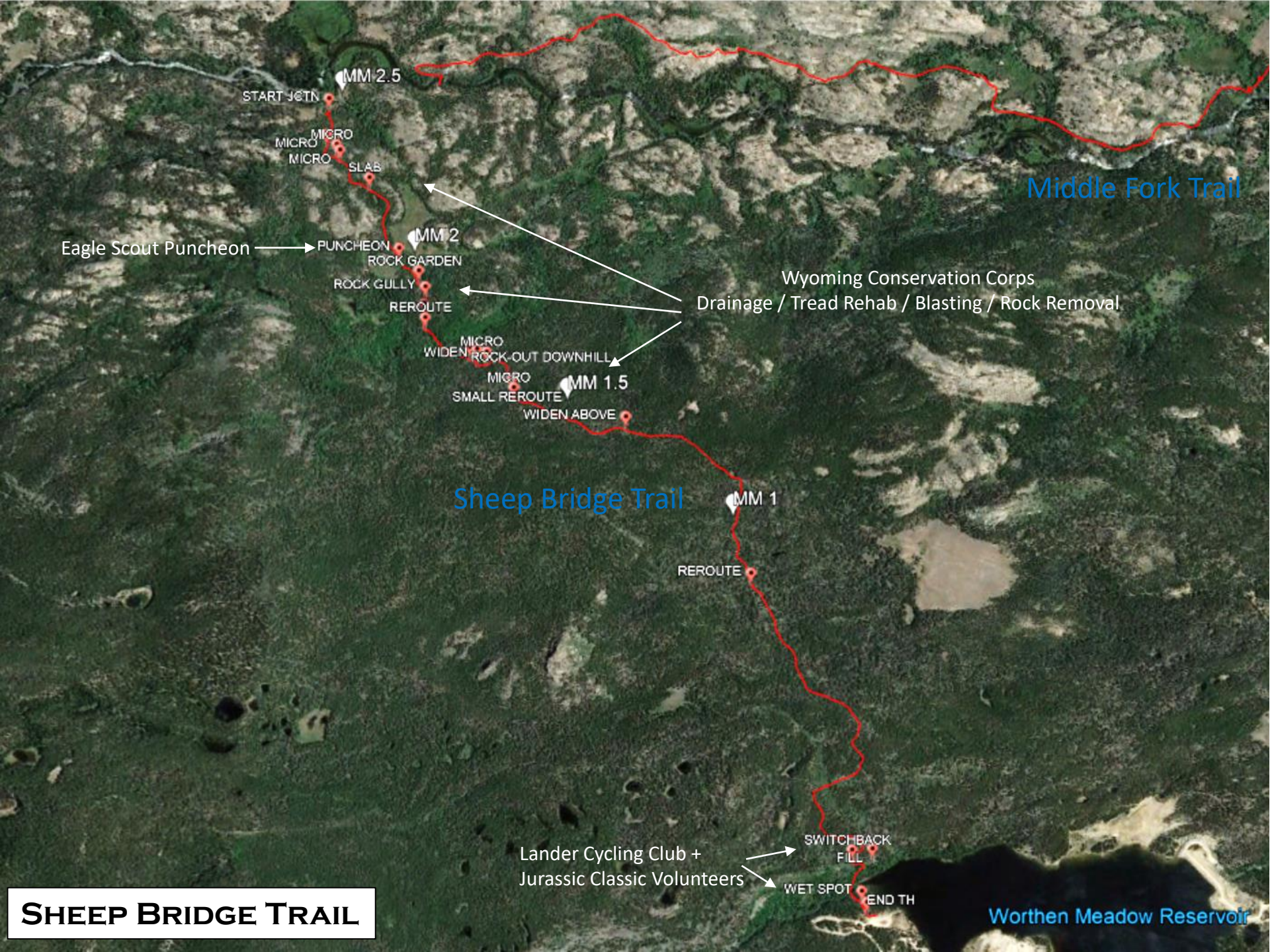


UPPER BREWERS TRAIL BRIDGES



RFC 1- 60" wide 22' long w/handrails
Pedestrian and cyclist only

RFC 4- 84" wide 25' long w/handrails
Equestrian, pedestrian, and cyclist



Middle Fork Trail

Eagle Scout Puncheon

MM 2.5

MICRO
MICRO
MICRO

SLAB

MM 2

PUNCHEON
ROCK GARDEN

ROCK GULLY

REROUTE

MICRO
WIDEN ROCK-OUT DOWNHILL

MICRO

SMALL REROUTE

MM 1.5

WIDEN ABOVE

Sheep Bridge Trail

MM 1

REROUTE

Lander Cycling Club +
Jurassic Classic Volunteers

SWITCHBACK
FILL

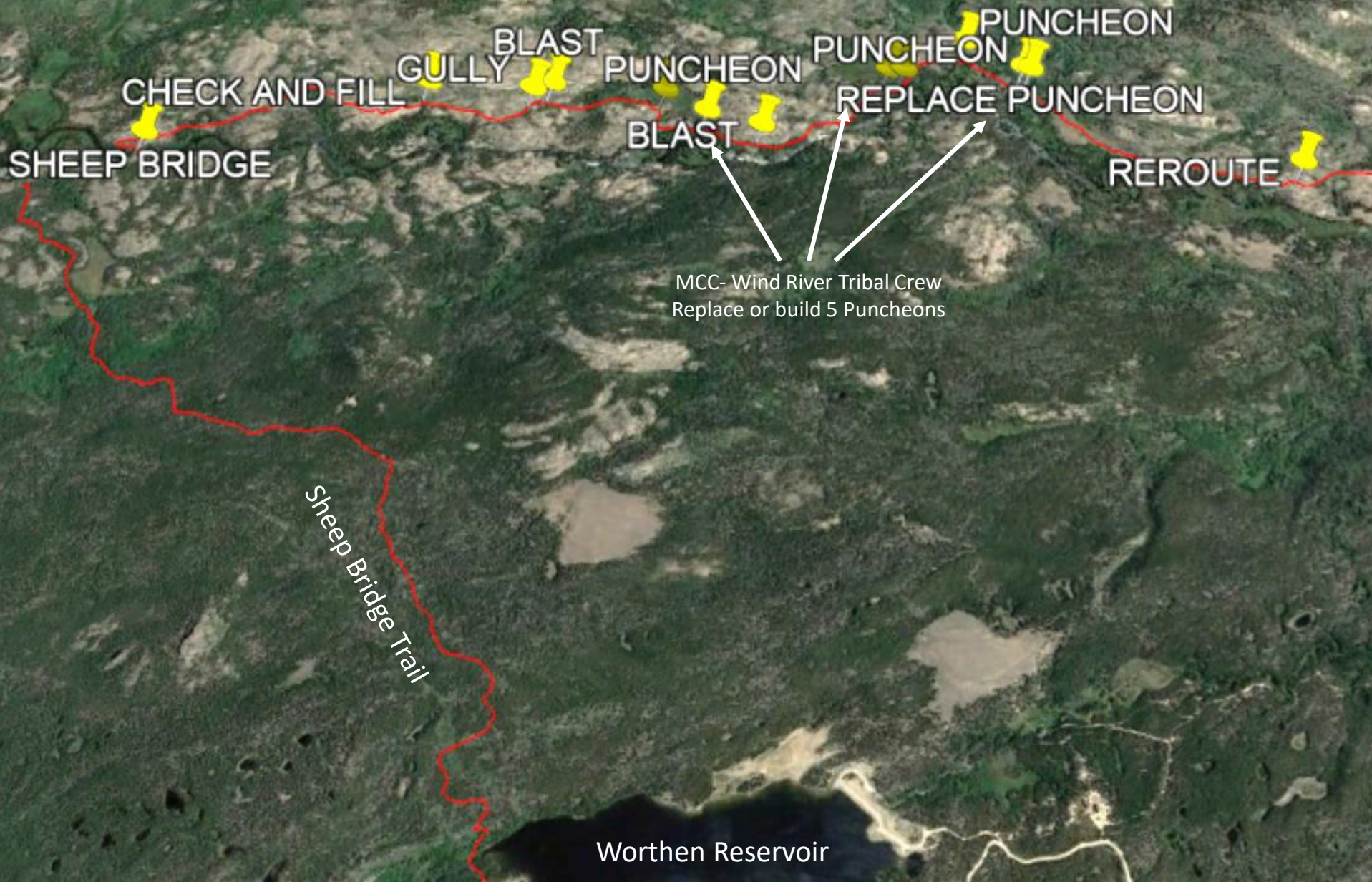
WET SPOT

END TH

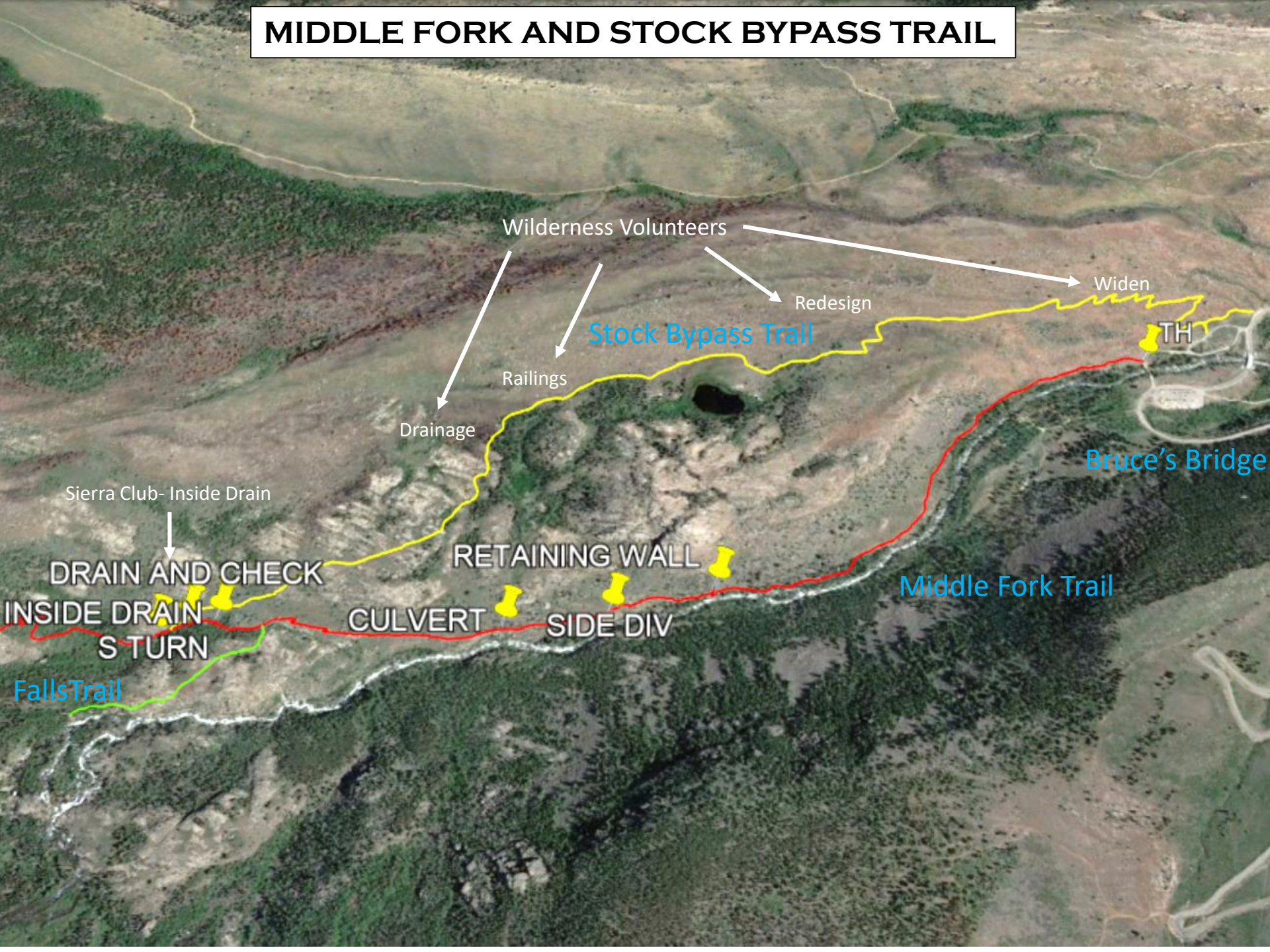
Worthen Meadow Reservoir

SHEEP BRIDGE TRAIL

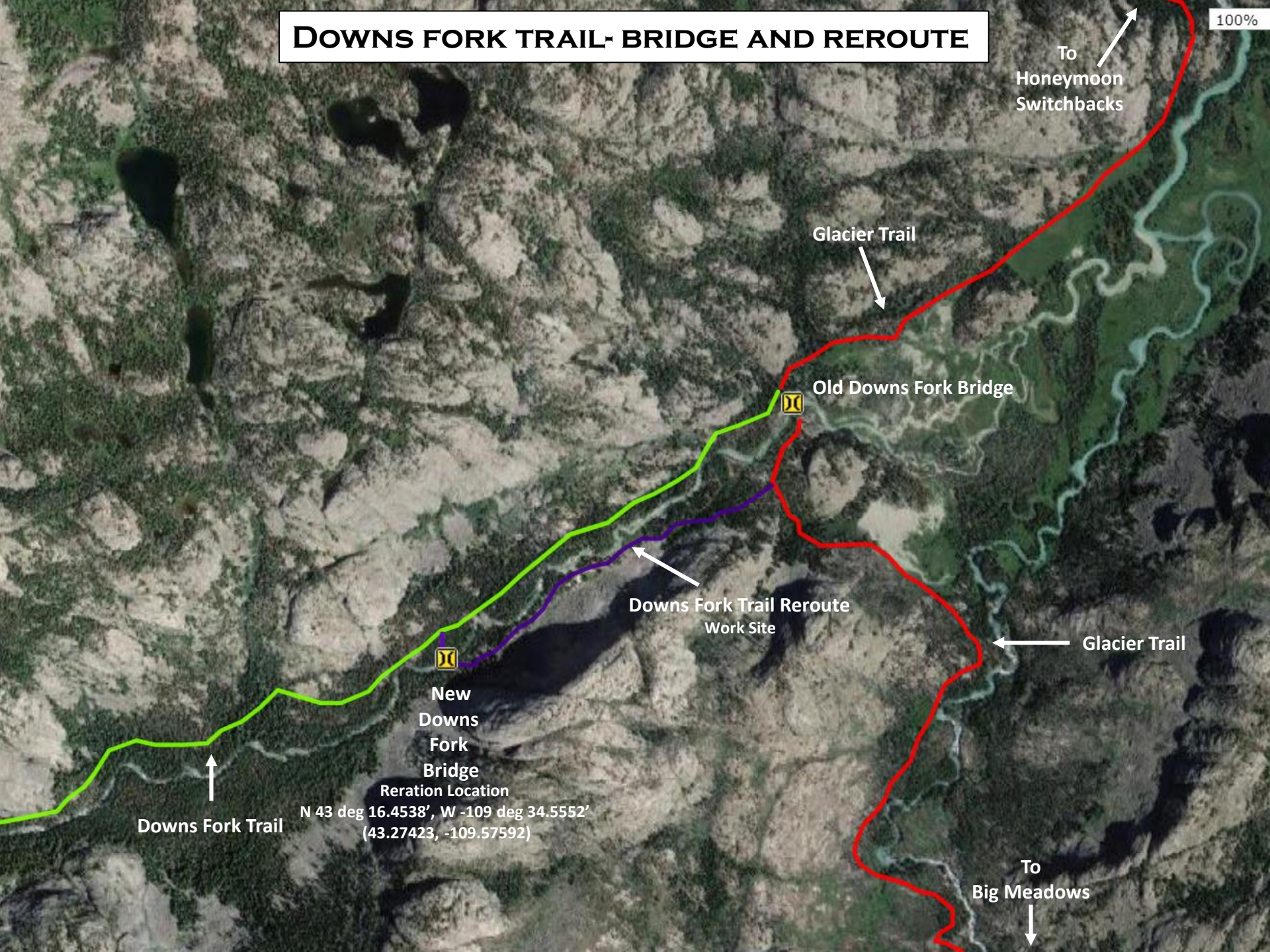
MIDDLE FORK TRAIL



MIDDLE FORK AND STOCK BYPASS TRAIL



DOWN'S FORK TRAIL- BRIDGE AND REROUTE



To
Honeymoon
Switchbacks

100%

Glacier Trail

Old Downs Fork Bridge

Downs Fork Trail Reroute
Work Site

Glacier Trail

New
Downs
Fork
Bridge
Reroute Location

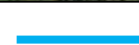
N 43 deg 16.4538', W -109 deg 34.5552'
(43.27423, -109.57592)

Downs Fork Trail

To
Big Meadows

Existing Continental Divide National Scenic Trail

2018-2020 CDNST Relocation Project- 7 miles



- Section 1- 1.1 miles- 10 small footbridges
- Section 2- .6 miles- 600 ft log retainer turnpike
- Section 3- 1.1 miles- Minor widening/drainage
- Section 4- .4 miles- Minor widening/drainage
- Section 5- 1.0 miles- New trail construction- Montana Conservation Corps
- Section 6- .6 miles- New trail construction- Montana Conservation Corps
- Section 7- .5 miles Sublette Pass Switchbacks- Private Trail Contractor (Mini-Excavator)
- Section 8- 1.7 miles- New trail construction- Private Trail Contractor (Mini-Excavator)

DUNOIR / WASHAKIE WILDERNESS MCC LOG-OUT/DEFERRED MAINTENANCE

